

C.I.P.**44 Mag. GR**

TAB. IX

Date 93-05-28

Pays d'origine: IT

Révision 00-06-07

CARTOUCHE MAXI**CHAMBRE MINI****Longueurs**

L1	=	
L2	=	
L3 ¹⁾	=	32.50
L4	=	
L5	=	
L6	=	32.00

Longueurs

L1	=	
L2	=	
L3 ¹⁾	=	33.00

Culot

R ¹⁾	=	1.42
R1	=	12.88
R3	=	
E	=	2.06
E1	=	11.30
e min	=	0.50
δ	=	45°
f	=	0.40
β	=	45°

Cuvette

R ¹⁾	=	1.45
R1	=	13.00
R2	=	
R3	=	
r	=	

Chambre à poudre

P1 ¹⁾	=	11.57
P2	=	

Chambre à poudre

E	=	
P1 ¹⁾	=	11.60
P2	=	

Cône de raccordement

α	=	
S	=	
r1 min	=	
r2	=	

Cône de raccordement

α	=	
S	=	
r1 max	=	
r2	=	

Collet

H1	=	
H2 ¹⁾	=	11.50

Collet

H1	=	
H2 ¹⁾	=	11.53

Projectile

G1	=	
G2	=	
F	=	
L3+G	=	

Prise de rayures

G1 ^{1)*}	=	8.00
G ^{1)*}	=	9.00
$\alpha 1$	=	90°
h	=	1.76
s [*]	=	7.80
i ¹⁾	=	45°
w	=	

Pressions (Énergies)**Méthode transducteur**

Pmax	=	400 bar
PK	=	460 bar
PE	=	520 bar
M	=	17.50

Canon

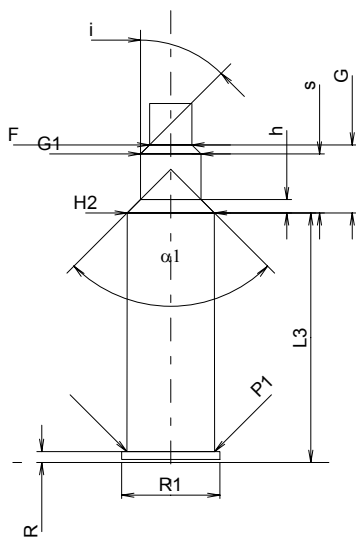
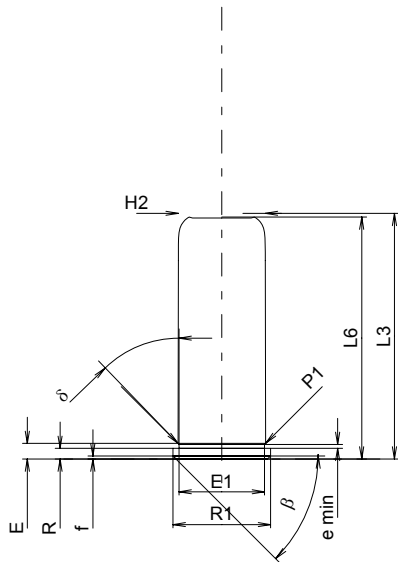
F ^{1)*}	=	5.60
Z ¹⁾	=	5.60

Rayures

b	=	
N	=	
u	=	
Q	=	24.63 mm ²

Autres indications

Fe	=	
delta L	=	



Échelle 1:1

Dimensions en << mm >>
Dimensions et tolérances pour les canons
d'épreuve: Voyez Annexe CR 6.

Notes: 1) A' contrôler pour la sécurité
* Dimensions de base