

C.I.P.**35 R GR**

TAB. IX

Date 93-05-28

Pays d'origine: DE

Révision 94-06-01

CARTOUCHE MAXI**CHAMBRE MINI****Longueurs**

L1	=	
L2	=	
L3 ¹⁾	=	25.80
L4	=	
L5	=	
L6	=	25.30

Longueurs

L1	=	
L2	=	
L3 ¹⁾	=	26.00

Culot

R ¹⁾	=	1.90	-0.10
R1	=	11.30	
R3	=		
E	=		
E1	=		
e min	=		
δ	=		
f	=	0.40	
β	=	45°	

Cuvette

R ¹⁾	=	1.90
R1	=	11.40
R2	=	
R3	=	
r	=	

Chambre à poudre

P1 ¹⁾	=	9.50
P2	=	

Chambre à poudre

E	=	
P1 ¹⁾	=	9.55
P2	=	

Cône de raccordement

α	=	
S	=	
r1 min	=	
r2	=	

Cône de raccordement

α	=	
S	=	
r1 max	=	
r2	=	

Collet

H1	=	
H2 ¹⁾	=	9.50

Collet

H1	=	
H2 ¹⁾	=	9.55

Projectile

G1	=	
G2	=	
F	=	
L3+G	=	

Prise de rayures

G1 ^{1)*}	=	6.00
G ^{1)*}	=	11.85
α1	=	90°
h	=	1.78
s [*]	=	11.00
i ¹⁾	=	45°
w	=	

Pressions (Énergies)**Méthode transducteur**

Pmax	=	800 bar
PK	=	920 bar
PE	=	1040 bar
M	=	8.50

Canon

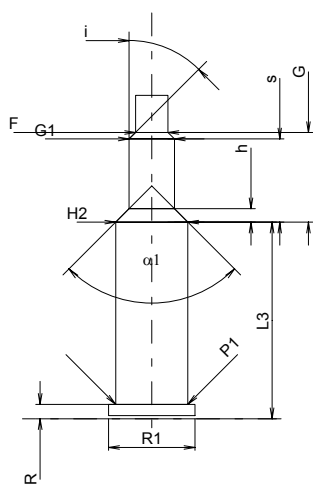
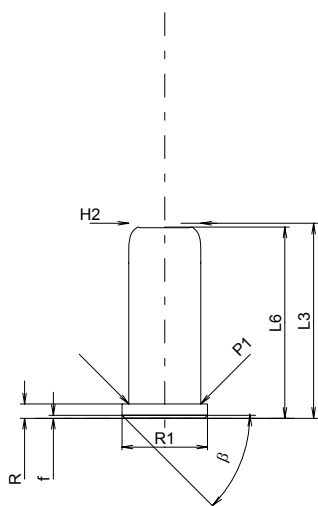
F ^{1)*}	=	4.30
Z ¹⁾	=	4.30

Rayures

b	=	
N	=	
u	=	
Q	=	14.52 mm ²

Autres indications

Fe	=	
delta L	=	



Échelle 1:1

Dimensions en << mm >>
Dimensions et tolérances pour les canons
d'épreuve: Voyez Annexe CR 6.

Notes: 1) A' contrôler pour la sécurité
* Dimensions de base