

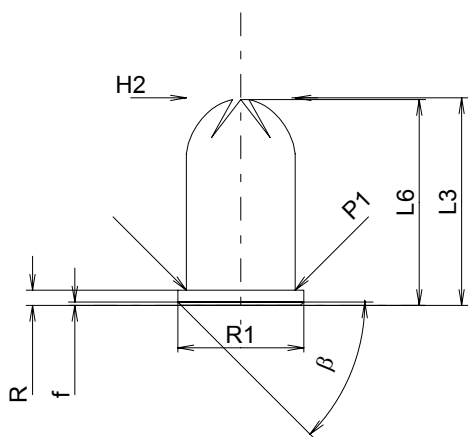
C.I.P.**9 x 17**

TAB. VI

Date 84-06-14

Révision 94-05-31

Pays d'origine: DE

**CARTOUCHE MAXI****Longueurs**

L1	=	
L2	=	
L3 ¹⁾	=	18.30
L4	=	
L5	=	
L6	=	18.15

Culot

R	=	1.35
R1	=	11.10
R3	=	
E	=	
E1	=	
e min	=	
δ	=	
f	=	0.30
β	=	45°

Chambre à poudre

P1	=	9.58
P2	=	

Cône de raccordement

α	=	
S	=	
r1 min	=	
r2	=	

Collet

H1	=	
H2 ¹⁾	=	9.58

Volumes [cm³]

VC	=	1.08
Va 1	=	0.40
Va 2	=	

Pressions (Énergies)**Méthode transducteur [Va1]**

Pmax	=	1450 bar
PK	=	1668 bar
PE	=	1885 bar
M	=	

Autres indications

Fe	=	
delta L	=	

CHAMBRE MINI**Longueurs**

L1	=	
L2	=	
L3 ¹⁾	=	18.50

Cuvette

R ¹⁾	=	1.30
R1	=	11.20
R2	=	
R3	=	
r	=	

Chambre à poudre

E	=	
P1	=	9.60
P2	=	

Cône de raccordement

α	=	
S	=	
r1 max	=	
r2	=	

Collet

H1	=	
H2	=	9.60

Prise de rayures

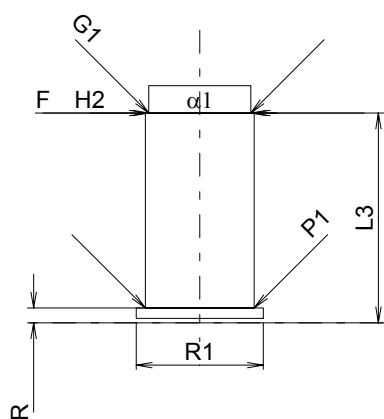
G1*	=	9.00
G	=	
α1	=	180°
h	=	
s	=	
i	=	
w	=	

Canon

F*	=	9.00
Z	=	9.00

Volumes [cm³]

V(ET)	=	1.37
V(T)	=	



Échelle 1.5:1

Dimensions en << mm >>
Dimensions et tolérances pour les canons
d'épreuve: Voyez Annexe CR 3.

Notes: 1) A' contrôler pour la sécurité
* Dimensions de base