

C.I.P.**8 Gauge Industriel**

TAB.

VI

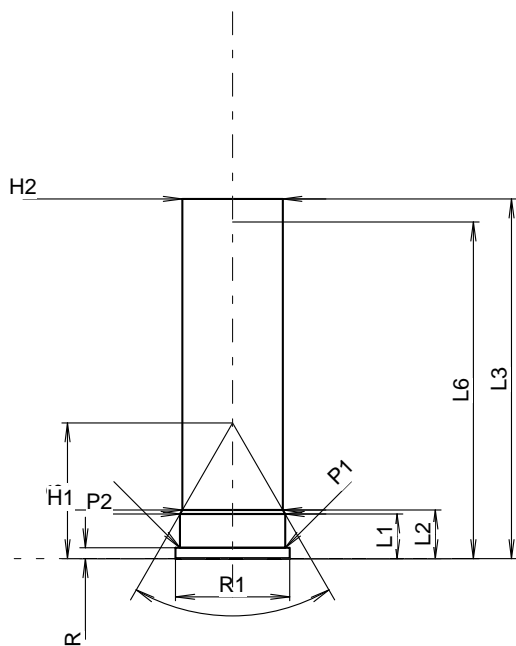
Date

84-06-14

Révision

15-05-19

Pays d'origine: US

**CARTOUCHE MAXI****Longueurs**

L1	=	10.29
L2	=	11.20
L3 ¹⁾	=	82.80
L4	=	
L5	=	
L6	=	77.47

Culot

R ¹⁾	=	2.54	-0.18
R1	=	26.29	
R3	=		
E	=		
E1	=		
e min	=		
δ	=		
f	=		
β	=		

Chambre à poudre

P1	=	24.21
P2 *	=	24.21

Cône de raccordement

α *	=	60°
S *	=	31.26
r1 min	=	
r2	=	

Collet

H1 *	=	23.16
H2 ¹⁾	=	23.16

Volumes [cm³]

VC	=	
Va 1	=	
Va 2	=	

Pressions (Énergies)**Méthode transducteur [Va1]**

Pmax	=	2200 bar
PK	=	2530 bar
PE	=	2860 bar
M	=	17.00

Autres indications

Fe	=	
delta L	=	

CHAMBRE MINI**Longueurs**

L1	=	9.91
L2	=	10.53
L3 ¹⁾	=	82.55

Cuvette

R ¹⁾	=	2.53
R1	=	26.31
R2	=	
R3	=	
r	=	

Chambre à poudre

E	=	
P1	=	24.26
P2 *	=	24.26

Cône de raccordement

α ¹⁾ *	=	60°
S *	=	30.92
r1 max	=	
r2	=	

Collet

H1 *	=	23.55
H2 ¹⁾	=	23.19

Prise de rayures

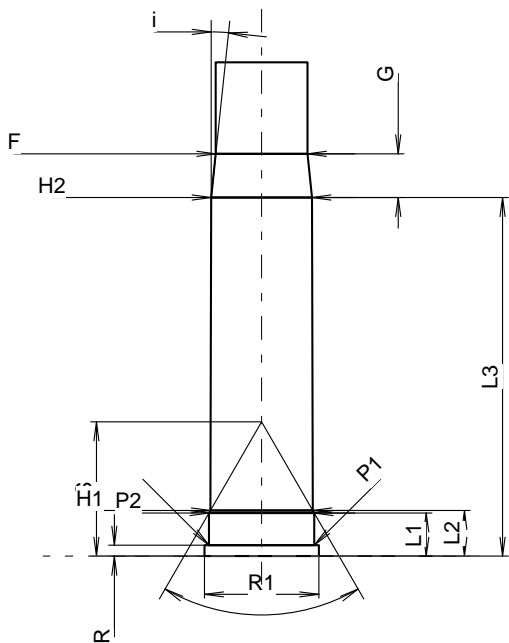
G1 ¹⁾ *	=	
G ¹⁾	=	10.03
α1	=	12°
h	=	
s *	=	
i ¹⁾ *	=	5°
w	=	

Canon

F ¹⁾ *	=	21.08
Z ¹⁾	=	21.08

Volumes [cm³]

V(ET)	=	
V(T)	=	



Échelle 1:1.74

Dimensions en << mm >>
Dimensions et tolérances pour les canons
d'épreuve: Voyez Annexe CR 3.

Notes: 1) A' contrôler pour la sécurité
* Dimensions de base