

C.I.P.**22 Piexon**

TAB.

VI

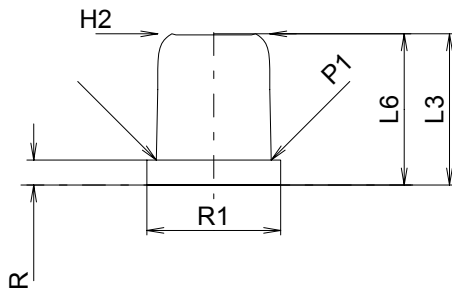
Date

02-01-22

Révision

02-05-15

Pays d'origine: DE

**CARTOUCHE MAXI****Longueurs**

L1	=	
L2	=	
L3 ¹⁾	=	10.00
L4	=	
L5	=	
L6	=	10.00

Colot

R	=	1.65
R1	=	8.85
R3	=	
E	=	-0.20
E1	=	
e min	=	
δ	=	
f	=	
β	=	

Chambre à poudre

P1	=	7.59
P2	=	

Cône de raccordement

α	=	
S	=	
r1 min	=	
r2	=	

Collet

H1	=	
H2 ¹⁾	=	7.40

Volumes [cm³]

VC	=	
Va 1	=	0.40
Va 2	=	

Pressions (Énergies)**Énergie [Va1]**

E _{max}	=	60.0 Joule
E _K	=	64.0 Joule
E _E	=	66.0 Joule

Autres indications

Fe	=	
delta L	=	

CHAMBRE MINI**Longueurs**

L1	=	
L2	=	
L3 ¹⁾	=	10.00

Cuvette

R ¹⁾	=	1.50
R1	=	9.00
R2	=	
R3	=	
r	=	

Chambre à poudre

E	=	
P1	=	7.62
P2	=	

Cône de raccordement

α	=	
S	=	
r1 max	=	
r2	=	

Collet

H1	=	
H2	=	7.42

Prise de rayures

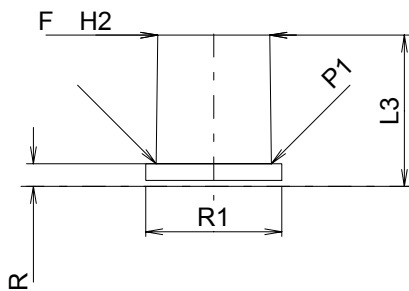
G1	=	
G	=	
α1	=	
h	=	
s	=	
i	=	
w	=	

Canon

F*	=	7.42
Z	=	7.42

Volumes [cm³]

V(ET)	=	
V(T)	=	



Échelle 2:1

Dimensions en << mm >>
Dimensions et tolérances pour les canons
d'épreuve: Voyez Annexe CR 3.

Notes: 1) A' contrôler pour la sécurité
* Dimensions de base