

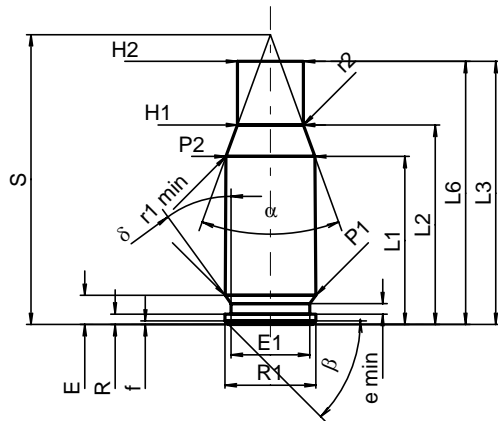
C.I.P.**12 x 35**

TAB. VI

Date 06-05-16

Pays d'origine: DE

Révision

**CARTOUCHE MAXI****Longueurs**

L1 ¹⁾	=	22.22
L2	=	26.38
L3	=	34.80
L4	=	
L5	=	
L6	=	34.80

Culot

R	=	1.37
R1	=	12.01
R3	=	
E	=	3.86
E1	=	10.39
e min	=	1.40
delta	=	36°
f	=	0.47
beta	=	45°

Chambre à poudre

P1	=	11.98
P2 ^{1)*}	=	11.75

Cône de raccordement

alpha*	=	40°
S*	=	38.35
r1 min	=	0.75
r2	=	3.20

Collet

H1*	=	8.72
H2 ¹⁾	=	8.72

Volumes [cm³]

VC	=	3.073
Va 1	=	
Va 2	=	

Pressions (Énergies)**Méthode transducteur [Va1]**

Pmax	=	1150 bar
PK	=	1323 bar
PE	=	1495 bar
M	=	

Autres indications

Fe	=	
delta L	=	

CHAMBRE MINI**Longueurs**

L1	=	22.40
L2	=	26.52
L3 ¹⁾	=	35.00

Cuvette

R	=	
R1	=	12.03
R2	=	
R3	=	
r	=	

Chambre à poudre

E	=	3.86
P1 ¹⁾	=	12.00
P2*	=	11.80

Cône de raccordement

alpha ^{1)*}	=	40°
S	=	38.61
r1 max	=	
r2	=	

Collet

H1*	=	8.80
H2 ¹⁾	=	8.80

Prise de rayures

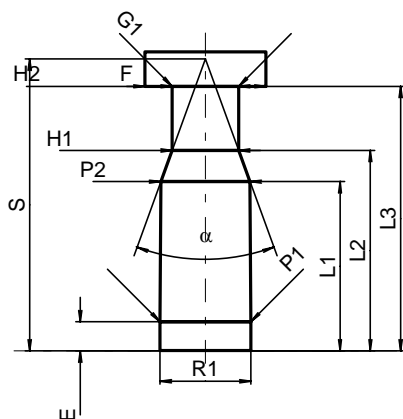
G1	=	8.80
G	=	
alpha1	=	180°
h	=	
s	=	
i	=	
w	=	

Canon

F	=	16.00
Z	=	16.00

Volumes [cm³]

V(ET)	=	3.329
V(T)	=	



Échelle 1:1

Dimensions en << mm >>
Dimensions et tolérances pour les canons
d'épreuve: Voyez Annexe CR 3.

Notes: 1) A contrôler pour la sécurité
* Dimensions de base