

C.I.P.**5 mm Rem. Mag.**

TAB.

V

Date

84-06-14

Pays d'origine: US

Révision

00-06-07

CARTOUCHE MAXI**CHAMBRE MINI****Longueurs**

L1	=	20.22
L2	=	21.15
L3 ¹⁾	=	25.91
L4	=	
L5	=	
L6	=	32.89

Longueurs

L1 ¹⁾	=	20.32
L2	=	21.24
L3 ¹⁾	=	26.04

Colot

R ¹⁾	=	1.26	-0.18
R1	=	8.26	
R3	=		
E	=		
E1	=		
e min	=		
δ	=		
f	=		
β	=		

Cuvette

R ¹⁾	=	1.26
R1	=	8.31
R2	=	
R3	=	
r	=	0.30

Chambre à poudre

P1	=	6.58
P2*	=	6.58

Chambre à poudre

E	=	
P1 ¹⁾	=	6.63
P2*	=	6.61

Cône de raccordement

α*	=	50°
S*	=	27.28
r1 min	=	1.14
r2	=	1.78

Cône de raccordement

α*	=	50°
S*	=	27.41
r1 max	=	1.14
r2	=	1.91

Collet

H1*	=	5.72
H2 ¹⁾	=	5.72

Collet

H1*	=	5.75
H2 ¹⁾	=	5.74

Projectile

G1 ¹⁾	=	5.21
G2	=	
F	=	
L3+G ¹⁾	=	29.23

Prise de rayures

G1*	=	5.23
G	=	3.32
α1*	=	90°
h	=	0.26
s	=	
i*	=	1°30'
w	=	

Pressions (Énergies)**Méthode crusher**

Pmax	=	2550 bar
PK	=	2933 bar
PE	=	3315 bar
M	=	27.71

Canon

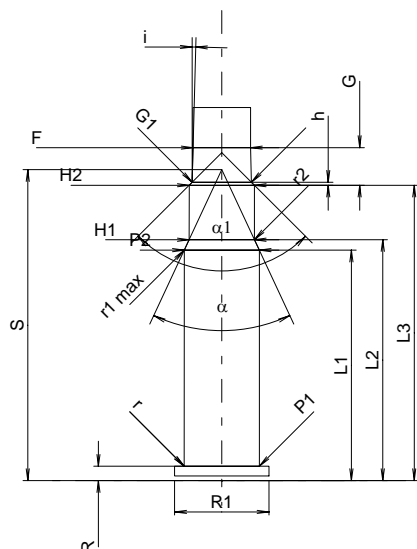
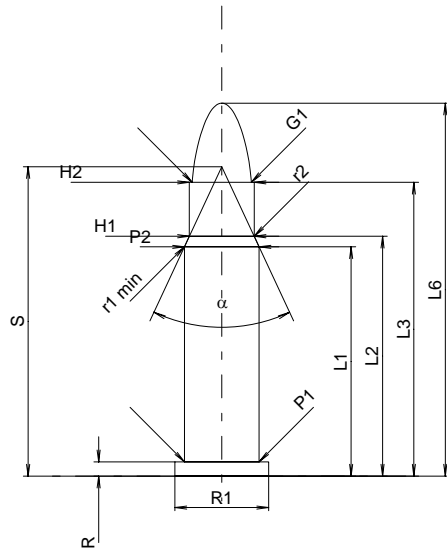
F ¹⁾ *	=	5.07
Z ¹⁾	=	5.19

Rayures

b	=	2.08
N	=	6
u	=	305.00
Q	=	20.96 mm ²

Autres indications

Fe ¹⁾	=	0.10
delta L	=	



Échelle 1.5:1

Dimensions en << mm >>
Dimensions et tolérances pour les canons
d'épreuve: Voyez Annexe CR 2.

Notes: 1) A' contrôler pour la sécurité
* Dimensions de base