

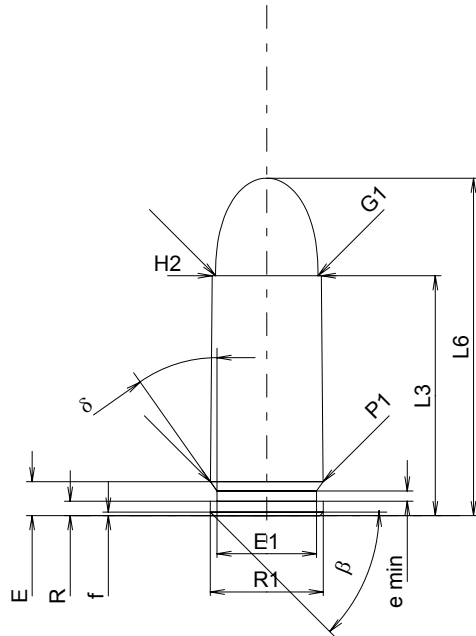
C.I.P.**9 x 21**

TAB. IV

Date 84-06-14

Pays d'origine: IL

Révision 00-06-07

**CARTOUCHE MAXI****Longueurs**

L1	=		
L2	=		
L3 ¹⁾	=	21.15	-0.25
L4	=		
L5	=		
L6	=	29.75	

Culot

R	=	1.27	
R1	=	9.96	
R3	=		
E	=	2.98	
E1	=	8.79	
e min	=	0.90	
δ	=	35°	
f	=	0.30	
β	=	45°	

Chambre à poudre

P1	=	9.93	
P2	=		

Cône de raccordement

α	=		
S	=		
r1 min	=		
r2	=		

Collet

H1	=		
H2 ¹⁾	=	9.63	

Projectile

G1 ¹⁾	=	9.03	
G2	=		
F	=		
L3+G ¹⁾	=	30.60	

Pressions (Énergies)

Méthode transducteur			
Pmax	=	2350 bar	
PK	=	2703 bar	
PE	=	3055 bar	
M	=	12.50	

Autres indications

Fe ¹⁾	=	0.30	
delta L	=		

CHAMBRE MINI**Longueurs**

L1	=		
L2	=		
L3 ¹⁾	=	21.15	

Cuvette

R	=		
R1	=	10.09	
R2	=		
R3	=		
r	=		

Chambre à poudre

E	=	6.20	
P1 ¹⁾	=	9.96	
P2	=		

Cône de raccordement

α	=		
S	=		
r1 max	=		
r2	=		

Collet

H1	=		
H2 ¹⁾	=	9.64	

Prise de rayures

G1 ^{1)*}	=	9.12	
G ¹⁾	=	9.45	
α1 [*]	=	180°	
h	=		
s	=		
i ^{1)*}	=	1°	
w	=		

Canon

F ^{1)*}	=	8.79	
Z ¹⁾	=	9.03	

Rayures

b	=	3.80	
N	=	4	
u	=	254.00	
Q	=	62.57	mm ²

Échelle 1.5:1

Dimensions en << mm >>
Dimensions et tolérances pour les canons
d'épreuve: Voyez Annexe CR 1.

Notes: 1) A' contrôler pour la sécurité
* Dimensions de base