

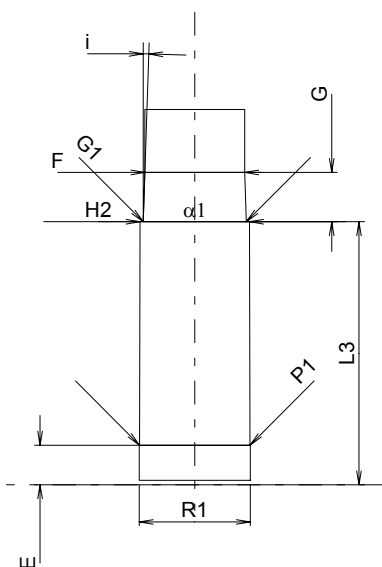
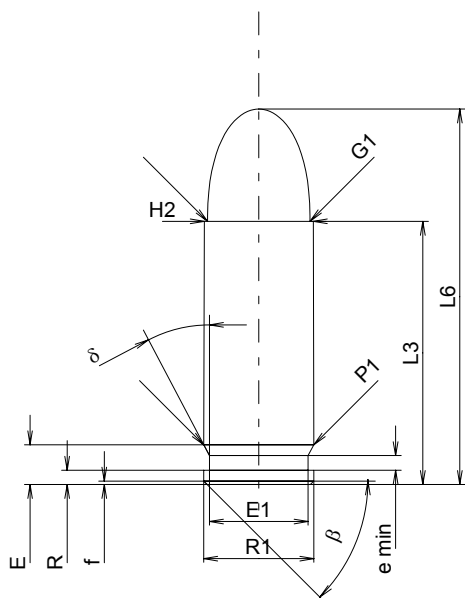
C.I.P.**9 mm Steyr**

Pays d'origine: AT

TAB. IV

Date 84-06-14

Révision 00-06-07



Échelle 1.5:1

Dimensions en << mm >>
Dimensions et tolérances pour les canons
d'épreuve: Voyez Annexe CR 1.

CARTOUCHE MAXI**Longueurs**

L1	=		
L2	=		
L3 ¹⁾	=	23.20	-0.25
L4	=		
L5	=		
L6	=	33.10	

Culot

R	=	1.25	
R1	=	9.70	
R3	=		
E	=	3.50	
E1	=	8.70	
e min	=	1.30	
δ	=	27°45'29"	
f	=	0.30	
β	=	45°	

Chambre à poudre

P1	=	9.70	
P2	=		

Cône de raccordement

α	=		
S	=		
r1 min	=		
r2	=		

Collet

H1	=		
H2 ¹⁾	=	9.62	

Projectile

G1 ¹⁾	=	9.03	
G2	=		
F	=		
L3+G ¹⁾	=	27.55	

Pressions (Énergies)**Méthode transducteur**

Pmax	=	1350 bar	
PK	=	1553 bar	
PE	=	1755 bar	
M	=	12.50	

Autres indications

Fe ¹⁾	=	0.30	
delta L	=		

CHAMBRE MINI**Longueurs**

L1	=		
L2	=		
L3 ¹⁾	=	23.20	

Cuvette

R	=		
R1	=	9.80	
R2	=		
R3	=		
r	=		

Chambre à poudre

E	=	3.50	
P1 ¹⁾	=	9.73	
P2	=		

Cône de raccordement

α	=		
S	=		
r1 max	=		
r2	=		

Collet

H1	=		
H2 ¹⁾	=	9.65	

Prise de rayures

G1 ^{1)*}	=	9.09	
G ^{1)*}	=	4.35	
α1	=	180°	
h	=		
s	=		
i ¹⁾	=	1°54'33"	
w	=		

Canon

F ^{1)*}	=	8.80	
Z ¹⁾	=	9.02	

Rayures

b	=	3.00	
N	=	6	
u	=	250.00	
Q	=	62.84	mm ²

Notes: 1) A' contrôler pour la sécurité
* Dimensions de base