

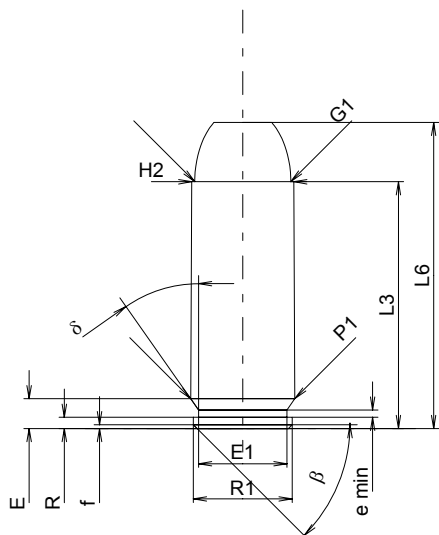
C.I.P.**50 AE**

TAB. IV

Date 91-10-18

Pays d'origine: IL

Révision 00-06-07

**CARTOUCHE MAXI****Longueurs**

L1	=		
L2	=		
L3 ¹⁾	=	32.64	-0.25
L4	=		
L5	=		
L6	=	40.50	

Culot

R	=	1.50	
R1	=	13.06	
R3	=		
E	=	3.94	
E1	=	11.70	
e min	=	0.95	
δ	=	35°	
f	=	0.50	
β	=	45°	

Chambre à poudre

P1	=	13.79	
P2	=		

Cône de raccordement

α	=		
S	=		
r1 min	=		
r2	=		

Collet

H1	=		
H2 ¹⁾	=	13.50	

Projectile

G1 ¹⁾	=	12.71	
G2	=		
F	=		
L3+G ¹⁾	=	36.19	

Pressions (Énergies)**Méthode transducteur**

Pmax	=	2300 bar	
PK	=	2645 bar	
PE	=	2990 bar	
M	=	10.50	

Autres indications

Fe ¹⁾	=	0.30	
delta L	=		

CHAMBRE MINI**Longueurs**

L1	=		
L2	=		
L3 ¹⁾	=	32.64	

Cuvette

R	=		
R1	=	13.96	
R2	=		
R3	=		
r	=		

Chambre à poudre

E	=	5.14	
P1 ¹⁾	=	13.89	
P2	=		

Cône de raccordement

α	=		
S	=		
r1 max	=		
r2	=		

Collet

H1	=		
H2 ¹⁾	=	13.52	

Prise de rayures

G1 ^{1)*}	=	12.75	
G ¹⁾	=	3.55	
α1 [*]	=	180°	
h	=		
s	=		
i ^{1)*}	=	2°34'59"	
w	=		

Canon

F ^{1)*}	=	12.43	
Z ¹⁾	=	12.73	

Rayures

b	=	3.43	
N	=	6	
u	=	482.60	
Q	=	124.29	mm ²

Échelle 1:1

Dimensions en << mm >>
Dimensions et tolérances pour les canons
d'épreuve: Voyez Annexe CR 1.

Notes: 1) A' contrôler pour la sécurité
* Dimensions de base