

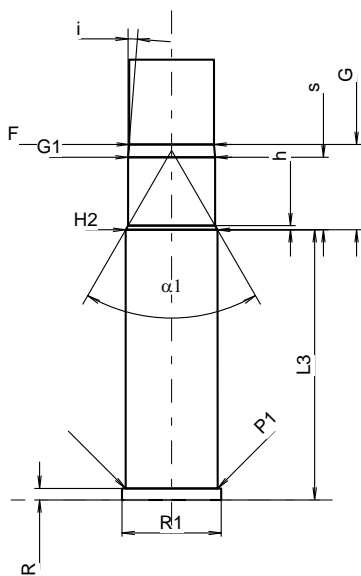
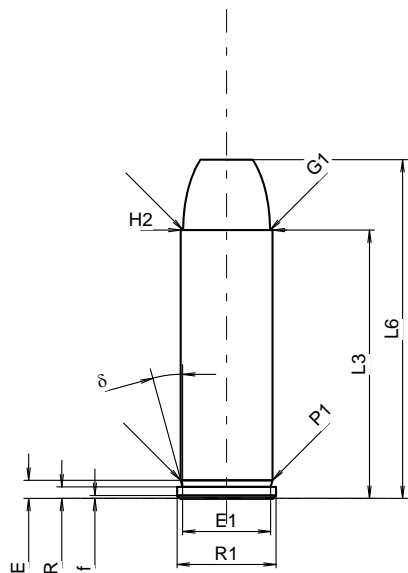
C.I.P.**454 Casull**

TAB. IV

Date 95-03-09

Pays d'origine: US

Révision 15-05-19



Échelle 1:1

CARTOUCHE MAXI**Longueurs**

L1	=	
L2	=	
L3 ¹⁾	=	35.50
L4	=	
L5	=	
L6	=	44.83

Culot

R ¹⁾	=	1.52	-0.25
R1	=	13.10	
R3	=		
E	=	2.40	
E1	=	11.65	
e min	=		
δ	=	15°15'18"	
f	=	0.40	
β	=		

Chambre à poudre

P1	=	12.13
P2	=	

Cône de raccordement

α *	=	
S *	=	
r1 min	=	
r2	=	

Collet

H1 *	=	
H2 ¹⁾	=	12.12

Projectile

G1 ¹⁾	=	11.49
G2	=	
F	=	
L3+G ¹⁾	=	46.78

Pressions (Énergies)**Méthode transducteur**

Pmax	=	3900 bar
PK	=	4485 bar
PE	=	5070 bar
M	=	17.50

Autres indications

Fe ¹⁾⁴⁾	=	0.25
delta L	=	

CHAMBRE MINI**Longueurs**

L1	=	
L2	=	
L3 ¹⁾	=	35.74

Cuvette

R ¹⁾	=	1.52
R1	=	13.11
R2	=	
R3	=	
r	=	

Chambre à poudre

E	=	
P1 ¹⁾	=	12.18
P2	=	

Cône de raccordement

α ^{1)*}	=	
S *	=	
r1 max	=	
r2	=	

Collet

H1 *	=	
H2 ¹⁾	=	12.13

Prise de rayures

G1 ^{1)*}	=	11.49
G ¹⁾	=	11.28
α1	=	60°
h	=	0.55
s *	=	9.60
i ^{1)*}	=	4°25'29"
w	=	

Canon

F ^{1)*}	=	11.23
Z ¹⁾	=	11.43

Rayures

b	=	4.06
N	=	6
u *	=	508.00
Q	=	101.54 mm ²

Dimensions en << mm >>
Dimensions et tolérances pour les canons
d'épreuve: Voyez Annexe CR 1.

Notes: 1) A' contrôler pour la sécurité
4) Feuillure sur la bourrelet
* Dimensions de base