

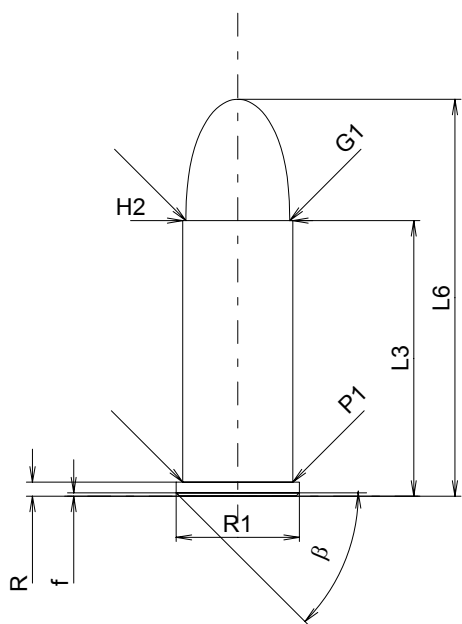
C.I.P.**380 Long**

TAB. IV

Date 84-06-14

Pays d'origine: GB

Révision 00-06-07

**CARTOUCHE MAXI****Longueurs**

L1	=	
L2	=	
L3 ¹⁾	=	24.30
L4	=	
L5	=	
L6	=	35.00

Colot

R ¹⁾	=	1.25	-0.25
R1	=	10.85	
R3	=		
E	=		
E1	=		
e min	=		
delta	=		
f	=	0.30	
beta	=	45°	

Chambre à poudre

P1	=	9.70
P2	=	

Cône de raccordement

alpha	=	
S	=	
r1 min	=	
r2	=	

Collet

H1	=	
H2 ¹⁾	=	9.70

Projectile

G1 ¹⁾	=	9.15
G2	=	
F	=	
L3+G ¹⁾	=	26.79

Pressions (Énergies)**Méthode transducteur**

Pmax	=	770 bar
PK	=	886 bar
PE	=	1001 bar
M	=	12.50

Autres indications

Fe ¹⁾	=	0.25
delta L	=	

CHAMBRE MINI**Longueurs**

L1	=	
L2	=	
L3 ¹⁾	=	24.50

Cuvette

R ¹⁾	=	1.25
R1	=	10.90
R2	=	
R3	=	
r	=	

Chambre à poudre

E	=	
P1 ¹⁾	=	9.75
P2	=	

Cône de raccordement

alpha	=	
S	=	
r1 max	=	
r2	=	

Collet

H1	=	
H2 ¹⁾	=	9.73

Prise de rayures

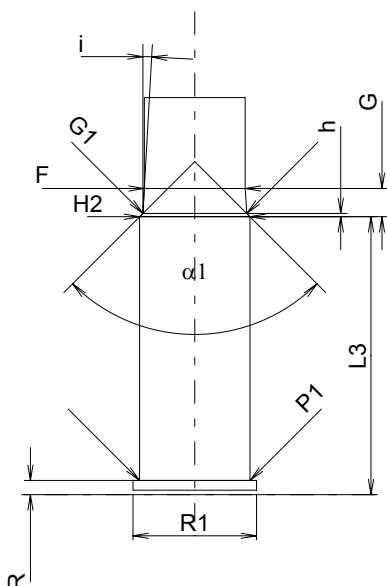
G1 ^{1)*}	=	9.15
G ^{1)*}	=	2.49
alpha1	=	90°
h*	=	0.29
s	=	
i ¹⁾	=	3°15'06"
w	=	

Canon

F ^{1)*}	=	8.90
Z ¹⁾	=	9.13

Rayures

b	=	2.40
N	=	6
u	=	500.00
Q	=	63.89 mm ²



Échelle 1.5:1

Dimensions en << mm >>
Dimensions et tolérances pour les canons
d'épreuve: Voyez Annexe CR 1.

Notes: 1) A' contrôler pour la sécurité
* Dimensions de base