

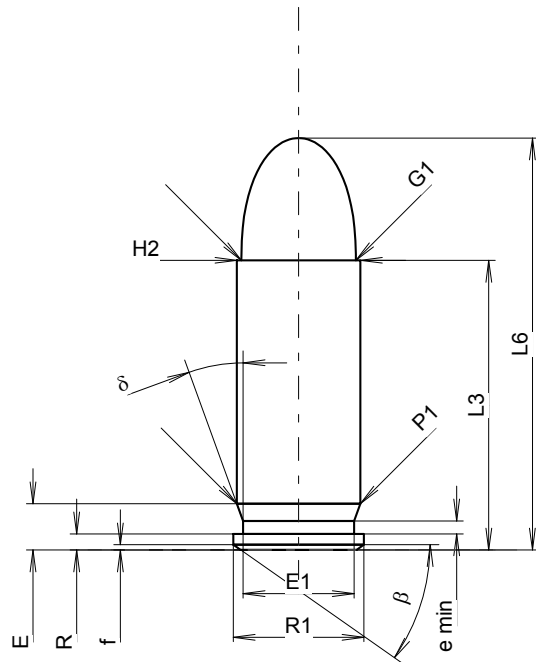
C.I.P.**38 Super Auto**

TAB. IV

Date 84-06-14

Pays d'origine: US

Révision 08-09-23

**CARTOUCHE MAXI****Longueurs**

L1	=	
L2	=	
L3 ¹⁾	=	22.86
L4	=	
L5	=	
L6	=	32.51

Culot

R ¹⁾	=	1.27	-0.25
R1	=	10.31	
R3	=		
E	=	3.65	
E1	=	8.76	
e min	=	1.02	
delta	=	20°	
f	=	0.41	
beta	=	35°	

Chambre à poudre

P1	=	9.75
P2	=	

Cône de raccordement

alpha	=	
S	=	
r1 min	=	
r2	=	

Collet

H1	=	
H2 ¹⁾	=	9.75

Projectile

G1 ¹⁾	=	9.04
G2	=	
F	=	
L3+G ¹⁾	=	28.01

Pressions (Énergies)**Méthode transducteur**

Pmax	=	2300 bar
PK	=	2645 bar
PE	=	2990 bar
M	=	12.50

Autres indications

Fe ¹⁾⁶⁾	=	0.30
delta L	=	

CHAMBRE MINI**Longueurs**

L1	=	
L2	=	
L3 ¹⁾	=	22.86

Cuvette

R ¹⁾	=	1.27
R1	=	10.34
R2	=	
R3	=	
r	=	

Chambre à poudre

E	=	
P1 ¹⁾	=	9.85
P2	=	

Cône de raccordement

alpha	=	
S	=	
r1 max	=	
r2	=	

Collet

H1	=	
H2 ¹⁾	=	9.83

Prise de rayures

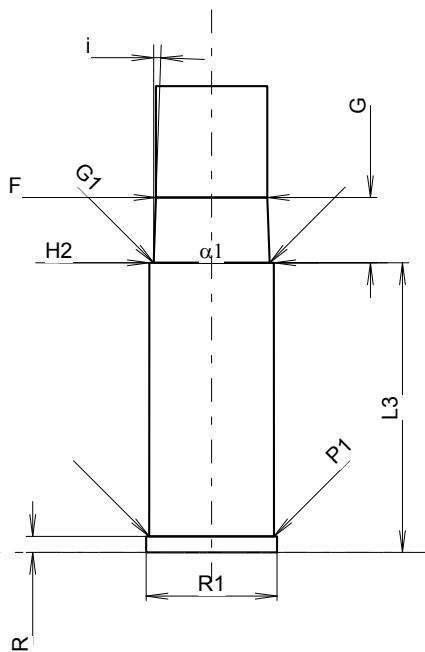
G1 ¹⁾ *	=	9.15
G ¹⁾	=	5.15
alpha1 *	=	180°
h	=	
s	=	
i ¹⁾ *	=	2°
w	=	

Canon

F ¹⁾ *	=	8.79
Z ¹⁾	=	9.02

Rayures

b	=	3.07
N	=	6
u	=	406.00
Q	=	62.85 mm ²



Échelle 1.68:1

Dimensions en << mm >>
Dimensions et tolérances pour les canons
d'épreuve: Voyez Annexe CR 1.

Notes: 1) A' contrôler pour la sécurité
6) Feuillure sur la bouche
* Dimensions de base