

C.I.P.**38 Spl. Wad Cut.**

TAB. IV

Date 84-06-14

Pays d'origine: US

Révision 00-06-07

CARTOUCHE MAXI**CHAMBRE MINI****Longueurs**

L1	=	
L2	=	
L3 ¹⁾	=	29.34
L4	=	
L5	=	
L6	=	30.35

Longueurs

L1	=	
L2	=	
L3 ¹⁾	=	29.54

Culot

R ¹⁾	=	1.50	-0.25
R1	=	11.18	
R3	=		
E	=		
E1	=		
e min	=		
δ	=		
f	=	0.38	
β	=	35°	

Cuvette

R ¹⁾	=	1.50
R1	=	11.28
R2	=	
R3	=	
r	=	

Chambre à poudre

P1	=	9.63
P2	=	

Chambre à poudre

E	=	
P1 ¹⁾	=	9.68
P2	=	

Cône de raccordement

α	=	
S	=	
r1 min	=	
r2	=	

Cône de raccordement

α	=	
S	=	
r1 max	=	
r2	=	

Collet

H1	=	
H2 ¹⁾	=	9.63

Collet

H1	=	
H2 ¹⁾	=	9.65

Projectile

G1 ¹⁾	=	9.14
G2	=	
F	=	
L3+G ¹⁾	=	43.06

Prise de rayures

G1 ^{1)*}	=	9.09
G ¹⁾	=	13.72
α1 [*]	=	13°
h	=	2.46
s	=	11.91
i ^{1)*}	=	4°45'
w	=	

Pressions (Énergies)**Méthode transducteur**

Pmax	=	1200 bar
PK	=	1380 bar
PE	=	1560 bar
M	=	10.50

Canon

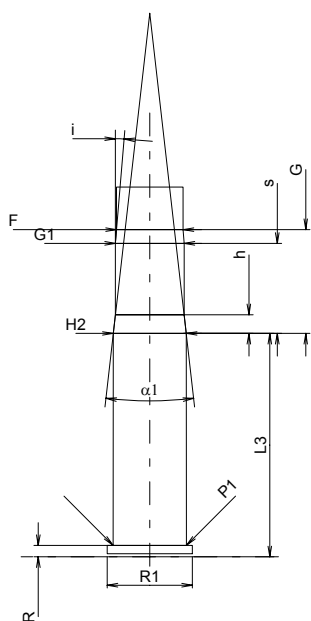
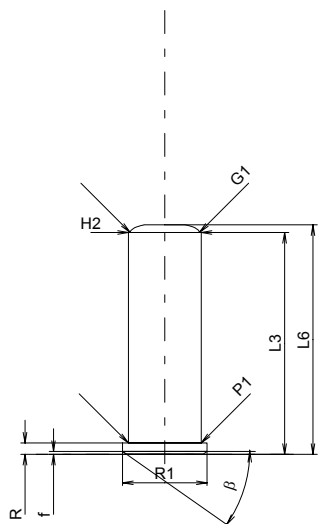
F ^{1)*}	=	8.79
Z ¹⁾	=	9.02

Rayures

b	=	2.67
N	=	6
u	=	476.00
Q	=	62.51 mm ²

Autres indications

Fe ¹⁾	=	0.25
delta L	=	



Échelle 1:1

Dimensions en << mm >>
Dimensions et tolérances pour les canons
d'épreuve: Voyez Annexe CR 1.

Notes: 1) A' contrôler pour la sécurité
* Dimensions de base