

C.I.P.**357 Magnum (carb)**

TAB.	IV
Date	84-06-14
Révision	05-11-02

Pays d'origine: US

CARTOUCHE MAXI**Longueurs**

L1	=
L2	=
L3	=
L4	=
L5	=
L6	=

Culot

R	=
R1	=
R3	=
E	=
E1	=
e min	=
δ	=
f	=
β	=

Chambre à poudre

P1	=
P2	=

Cône de raccordement

α	=
S	=
r1 min	=
r2	=

Collet

H1	=
H2	=

Projectile

G1	=
G2	=
F	=
L3+G	=

Pressions (Énergies)

Fe ¹⁾	=	0.15
delta L	=	

Autres indications

Fe ¹⁾	=	0.15
delta L	=	

CHAMBRE MINI**Longueurs**

L1	=	
L2	=	
L3 ¹⁾	=	33.07

Cuvette

R ¹⁾	=	1.52
R1	=	11.28
R2	=	
R3	=	
r	=	

Chambre à poudre

E	=	
P1 ¹⁾	=	9.68
P2	=	

Cône de raccordement

α	=
S	=
r1 max	=
r2	=

Collet

H1	=	
H2 ¹⁾	=	9.65

Prise de rayures

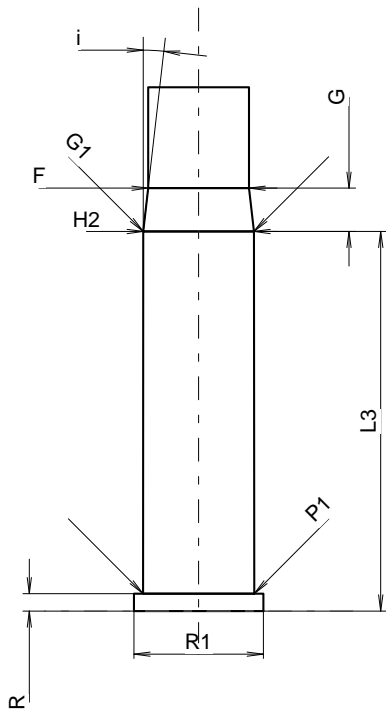
G1 ¹⁾ *	=	9.65
G ¹⁾	=	3.77
$\alpha 1^*$	=	
h	=	
s	=	
i ¹⁾ *	=	6°30'
w	=	

Canon

F ¹⁾ *	=	8.79
Z ¹⁾	=	9.02

Rayures

b	=	2.69
N	=	6
u	=	476.00
Q	=	62.57 mm ²



Échelle 1.52:1

Dimensions en << mm >>
Dimensions et tolérances pour les canons
d'épreuve: Voyez Annexe .

Notes: 1) A' contrôler pour la sécurité
* Dimensions de base