

C.I.P.**22 Rem. Jet Mag.**

TAB. IV

Date 84-06-14

Pays d'origine: US

Révision 00-06-07

CARTOUCHE MAXI**CHAMBRE MINI****Longueurs**

L1	=	15.19
L2	=	27.62
L3 ¹⁾	=	32.72
L4	=	
L5	=	
L6	=	42.14

Longueurs

L1	=	15.26
L2	=	27.52
L3 ¹⁾	=	32.97

Culot

R ¹⁾	=	1.50	-0.25
R1	=	11.18	
R3	=		
E	=		
E1	=		
e min	=		
δ	=		
f	=	0.38	
β	=	35°	

Cuvette

R ¹⁾	=	1.52
R1	=	11.28
R2	=	
R3	=	
r	=	

Chambre à poudre

P1	=	9.65
P2*	=	9.29

Chambre à poudre

E	=	
P1 ¹⁾	=	9.65
P2*	=	9.30

Cône de raccordement

α*	=	13°21'
S*	=	54.88
r1 min	=	0.76
r2	=	2.54

Cône de raccordement

α*	=	13°21'
S*	=	54.99
r1 max	=	0.76
r2	=	3.18

Collet

H1*	=	6.38
H2 ¹⁾	=	6.38

Collet

H1*	=	6.43
H2 ¹⁾	=	6.40

Projectile

G1 ¹⁾	=	5.65
G2	=	
F	=	
L3+G ¹⁾	=	43.03

Prise de rayures

G1 ^{1)*}	=	5.69
G ¹⁾	=	10.31
α1*	=	90°
h	=	0.35
s	=	9.53
i ^{1)*}	=	4°45'
w	=	

Pressions (Énergies)**Méthode transducteur**

Pmax	=	2550 bar
PK	=	2933 bar
PE	=	3315 bar
M	=	10.50

Canon

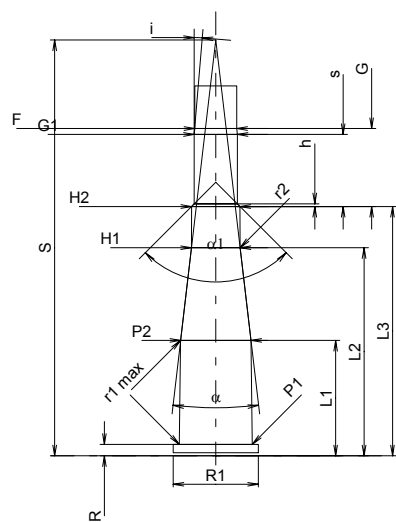
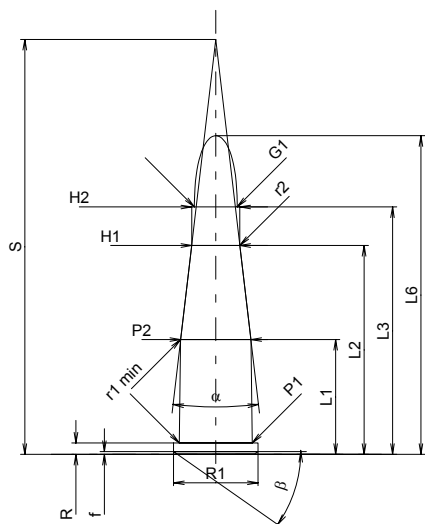
F ^{1)*}	=	5.56
Z ¹⁾	=	5.65

Rayures

b	=	1.80
N	=	6
u	=	381.00
Q	=	24.77 mm ²

Autres indications

Fe ¹⁾	=	0.25
delta L	=	



Échelle 1:1

Dimensions en << mm >>
Dimensions et tolérances pour les canons
d'épreuve: Voyez Annexe CR 1.

Notes: 1) A' contrôler pour la sécurité
* Dimensions de base