

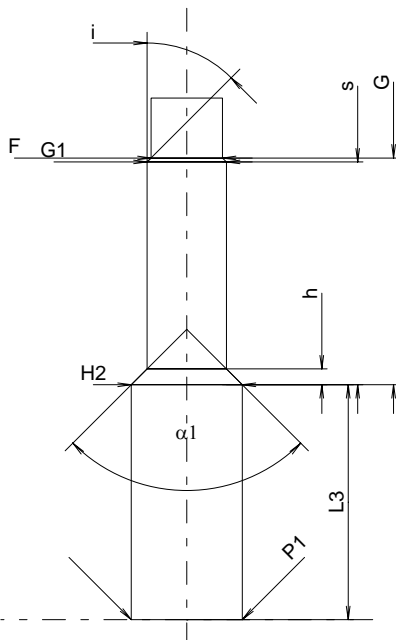
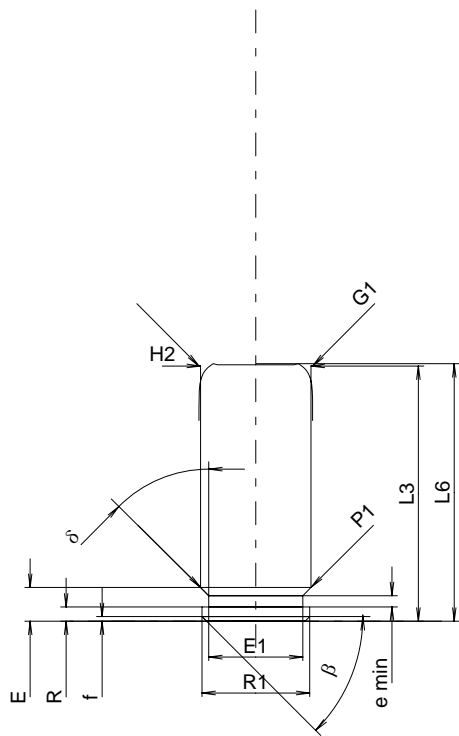
C.I.P.**10 x 22 T**

TAB. IV

Date 00-12-11

Pays d'origine: IT

Révision 04-09-27

**CARTOUCHE MAXI****Longueurs**

L1	=		
L2 *	=	22.00	
L3 ¹⁾	=	22.50	-0.25
L4	=		
L5	=		
L6	=	22.70	

Culot

R	=	1.25	
R1	=	9.50	
R3	=		
E	=	2.97	
E1	=	8.30	
e min	=	1.00	
delta	=	40°	
f	=	0.40	
beta	=	45°	

Chambre à poudre

P1	=	9.75	
P2	=		

Cône de raccordement

alpha	=		
S	=		
r1 min	=		
r2	=		

Collet

H1	=		
H2 ¹⁾	=	9.75	

Projectile

G1 ¹⁾	=	10.00	
G2	=		
F	=		
L3+G ¹⁾	=	42.50	

Pressions (Énergies)**Méthode transducteur**

Pmax	=	450 bar	
PK	=	518 bar	
PE	=	585 bar	
M	=	12.50	

Autres indications

Fe	=	0.30	
delta L	=		

CHAMBRE MINI**Longueurs**

L1	=		
L2	=		
L3 ¹⁾	=	20.70	

Cuvette

R	=		
R1	=		
R2	=		
R3	=		
r	=		

Chambre à poudre

E	=		
P1 ¹⁾	=	9.80	
P2	=		

Cône de raccordement

alpha	=		
S	=		
r1 max	=		
r2	=		

Collet

H1	=		
H2 ¹⁾	=	9.80	

Prise de rayures

G1 ^{1)*}	=	7.00	
G ^{1)*}	=	20.00	
alpha1	=	90°	
h	=	1.40	
s *	=	19.65	
i ¹⁾	=	45°	
w	=		

Canon

F ^{1)*}	=	6.30	
Z	=		

Rayures

b	=		
N	=		
u	=		
Q	=	31.17	mm ²

Échelle 1.5:1

Dimensions en << mm >>
Dimensions et tolérances pour les canons
d'épreuve: Voyez Annexe CR 1.

Notes: 1) A' contrôler pour la sécurité
* Dimensions de base