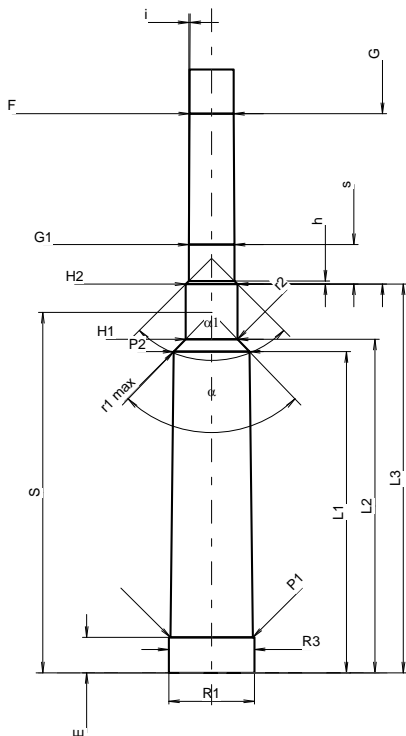
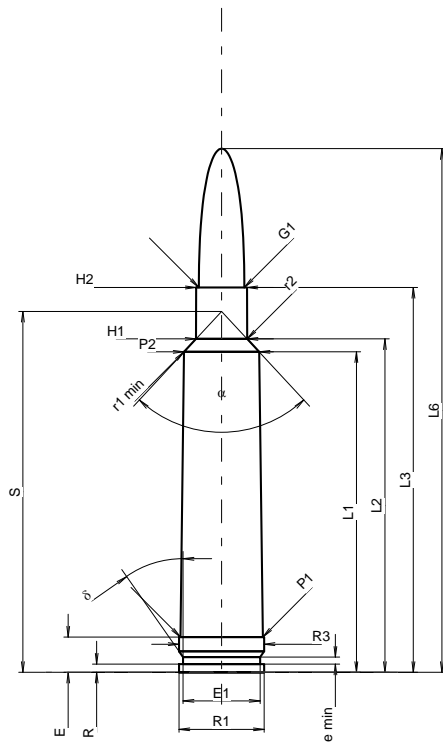


C.I.P.**7 x 61 Super**

TAB.	III
Date	90-04-24
Révision	11-05-25

Pays d'origine: US



Échelle 1:1.2

Dimensions en << mm >>
Dimensions et tolérances pour les canons
d'épreuve: Voyez Annexe CR 1.

CARTOUCHE MAXI**Longueurs**

L1	=	50.80
L2	=	52.85
L3 ¹⁾	=	61.00
L4	=	
L5	=	
L6	=	83.00

Culot

R	=	1.30
R1	=	13.50
R3	=	13.50
E ¹⁾	=	5.60
E1	=	12.20
e min	=	1.10
delta	=	35°
f	=	
beta	=	

Chambre à poudre

P1	=	13.05
P2 *	=	11.91

Cône de raccordement

alpha * ¹⁾	=	85°45'
S *	=	57.21
r1 min	=	2.00
r2	=	1.50

Collet

H1 *	=	8.10
H2 ¹⁾	=	8.06

Projectile

G1 ¹⁾	=	7.20
G2	=	7.20
F	=	
L3+G ¹⁾	=	88.00

Pressions (Énergies)**Méthode transducteur**

Pmax	=	4050 bar
PK	=	4658 bar
PE	=	5060 bar
M	=	25.00
EE	=	4620 Joule

Autres indications

Fe ¹⁾⁵⁾	=	0.10
delta L	=	

CHAMBRE MINI**Longueurs**

L1	=	50.90
L2	=	52.87
L3 ¹⁾	=	61.62

Cuvette

R	=	
R1	=	13.56
R2	=	
R3	=	13.56
r	=	

Chambre à poudre

E ¹⁾	=	5.62
P1	=	13.08
P2 ¹⁾ *	=	12.01

Cône de raccordement

alpha ¹⁾ * ¹⁾	=	88°
S *	=	57.12
r1 max	=	2.00
r2	=	1.50

Collet

H1 *	=	8.21
H2 ¹⁾	=	8.18

Prise de rayures

G1 ¹⁾ *	=	7.23
G ¹⁾	=	27.00
alpha 1 * ¹⁾	=	90°
h	=	0.48
s	=	6.25
i ¹⁾ *	=	0°19'3"
w	=	

Canon

F ¹⁾ *	=	7.00
Z ¹⁾	=	7.22

Rayures

b	=	2.70
N	=	6
u	=	229.00
Q	=	40.31 mm ²

Notes: 1) A' contrôler pour la sécurité
5) Feuillure sur la culot magnum
* Dimensions de base