

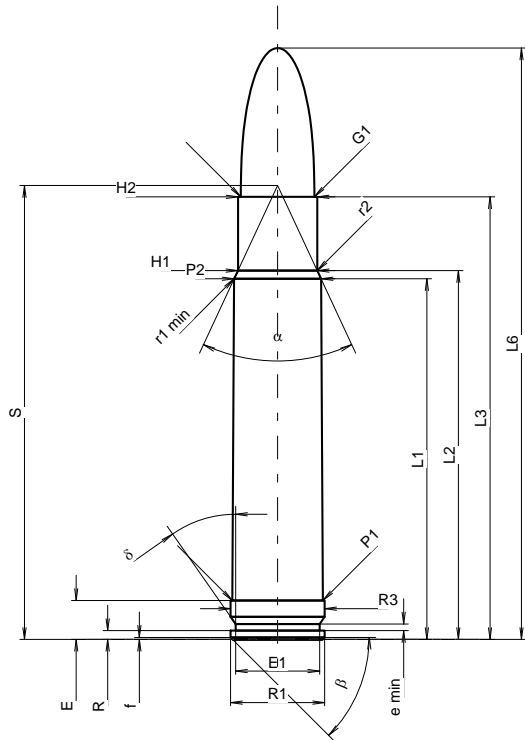
C.I.P.**416 Taylor Mag.**

TAB. III

Date 08-04-15

Révision 11-05-25

Pays d'origine: US

**CARTOUCHE MAXI****Longueurs**

L1	=	51.75
L2	=	52.92
L3 ¹⁾	=	63.50
L4	=	
L5	=	
L6	=	84.84

Culot

R	=	1.27
R1	=	13.51
R3	=	13.51
E ¹⁾	=	5.59
E1	=	12.07
e min	=	0.94
delta	=	35°
f	=	0.30
beta	=	45°

Chambre à poudre

P1	=	13.01
P2 *	=	12.47

Cône de raccordement

alpha *	=	50°
S *	=	65.12
r1 min	=	0.81
r2	=	1.27

Collet

H1 *	=	11.38
H2 ¹⁾	=	11.35

Projectile

G1 ¹⁾	=	10.57
G2	=	
F	=	
L3+G ¹⁾	=	73.35

Pressions (Énergies)**Méthode transducteur**

Pmax	=	4400 bar
PK	=	5060 bar
PE	=	5500 bar
M	=	25.00
EE	=	7400 Joule

Autres indications

Fe ¹⁾⁵⁾	=	0.10
delta L	=	

CHAMBRE MINI**Longueurs**

L1	=	51.90
L2	=	53.06
L3 ¹⁾	=	63.88

Cuvette

R	=	
R1	=	13.59
R2	=	
R3	=	13.59
r	=	

Chambre à poudre

E ¹⁾	=	5.59
P1 ¹⁾	=	13.06
P2 *	=	12.49

Cône de raccordement

alpha *	=	50°
S *	=	65.29
r1 max	=	0.50
r2	=	0.50

Collet

H1 *	=	11.41
H2 ¹⁾	=	11.38

Prise de rayures

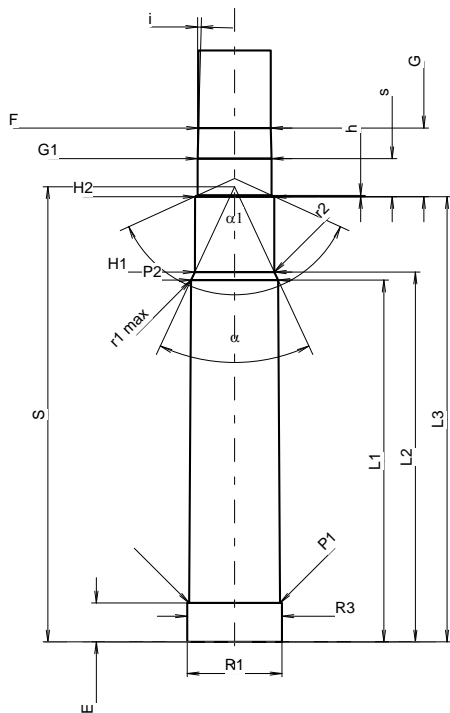
G1 ¹⁾ *	=	10.59
G ¹⁾	=	9.85
alpha1 *	=	131°
h	=	0.18
s	=	5.46
i ¹⁾ *	=	1°30'
w	=	

Canon

F ¹⁾ *	=	10.36
Z ¹⁾	=	10.57

Rayures

b	=	3.25
N	=	6
u	=	254.00
Q	=	86.38 mm ²



Échelle 1:1.08

Dimensions en << mm >>
Dimensions et tolérances pour les canons
d'épreuve: Voyez Annexe CR 1.

Notes: 1) A' contrôler pour la sécurité
5) Feuillure sur la culot magnum
* Dimensions de base