

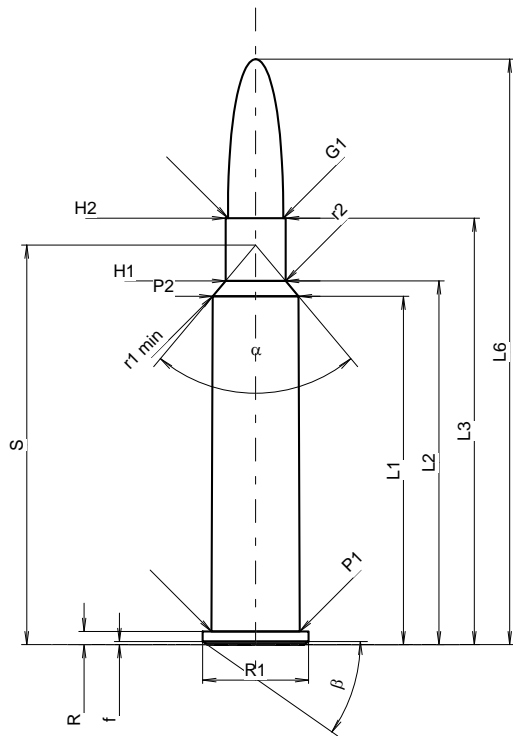
C.I.P.**6,5 x 52 R K&S**

TAB. II

Date 12-05-30

Pays d'origine: DE

Révision

**CARTOUCHE MAXI****Longueurs**

L1	=	42.32
L2	=	44.18
L3 ¹⁾	=	51.80
L4	=	
L5	=	
L6	=	71.12

Culot

R ¹⁾	=	1.60	-0.25
R1	=	12.85	
R3	=		
E	=		
E1	=		
e min	=		
delta	=		
f	=	0.38	
beta	=	35°	

Chambre à poudre

P1	=	10.72
P2 *	=	10.42

Cône de raccordement

alpha *	=	80°
S *	=	48.53
r1 min	=	1.00
r2	=	1.00

Collet

H1 *	=	7.30
H2 ¹⁾	=	7.30

Projectile

G1 ¹⁾	=	6.72
G2	=	
F	=	
L3+G ¹⁾	=	60.15

Pressions (Énergies)**Méthode transducteur**

Pmax	=	3250 bar
PK	=	3738 bar
PE	=	4063 bar
M	=	25.00
EE	=	2450 Joule

Autres indications

Fe ¹⁾⁴⁾	=	0.15
delta L	=	

CHAMBRE MINI**Longueurs**

L1	=	42.35
L2	=	44.20
L3 ¹⁾	=	52.10

Cuvette

R ¹⁾	=	1.60
R1	=	12.90
R2	=	
R3	=	
r	=	

Chambre à poudre

E	=	
P1 ¹⁾	=	10.75
P2 *	=	10.45

Cône de raccordement

alpha *	=	80°
S *	=	48.58
r1 max	=	1.00
r2	=	1.00

Collet

H1 *	=	7.34
H2 ¹⁾	=	7.33

Prise de rayures

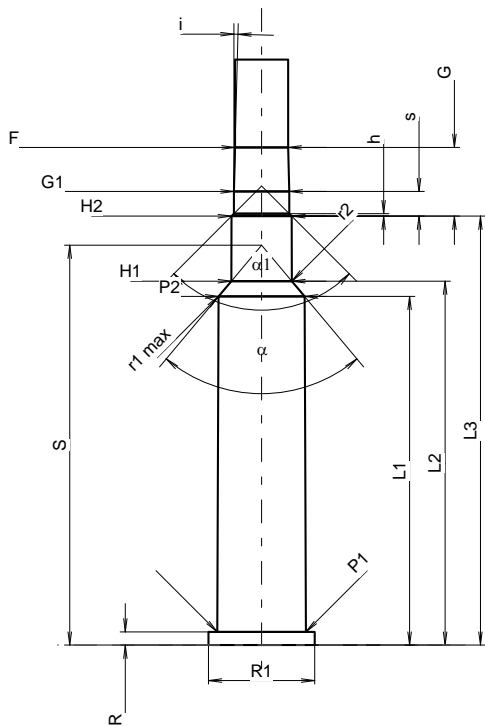
G1 ¹⁾ *	=	6.73
G ¹⁾	=	8.35
alpha l	=	90°
h	=	0.30
s *	=	3.00
i ¹⁾ *	=	1°30'
w	=	

Canon

F ¹⁾ *	=	6.45
Z ¹⁾	=	6.70

Rayures

b	=	3.50
N	=	4
u	=	200.00
Q	=	34.52 mm ²



Échelle 1.09:1

Dimensions en << mm >>
Dimensions et tolérances pour les canons
d'épreuve: Voyez Annexe CR 1.

Notes: 1) A' contrôler pour la sécurité
4) Feuillure sur la bourrelet
* Dimensions de base