

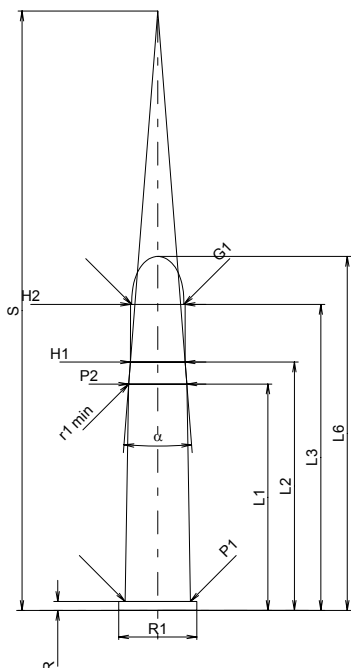
C.I.P.**40-82 Win.**

TAB. II

Date 84-06-14

Pays d'origine: US

Révision 02-05-15

**CARTOUCHE MAXI****Longueurs**

L1	=	44.91
L2	=	49.27
L3 ¹⁾	=	60.71
L4	=	
L5	=	
L6	=	70.23

Colot

R ¹⁾	=	1.78	-0.25
R1	=	15.49	
R3	=		
E	=		
E1	=		
e min	=		
delta	=		
f	=		
beta	=	45°	

Chambre à poudre

P1	=	12.92
P2 *	=	11.54

Cône de raccordement

alpha *	=	8°55'
S *	=	118.91
r1 min	=	25.40
r2	=	

Collet

H1 *	=	10.86
H2 ¹⁾	=	10.85

Projectile

G1 ¹⁾	=	10.35
G2	=	
F	=	
L3+G ¹⁾	=	61.90

Pressions (Énergies)**Méthode transducteur**

Pmax	=	1650 bar
PK	=	1898 bar
PE	=	2060 bar
M	=	25.00
EE	=	1590 Joule

Autres indications

Fe ¹⁾	=	0.15
delta L	=	

CHAMBRE MINI**Longueurs**

L1	=	44.83
L2	=	49.25
L3 ¹⁾	=	61.85

Cuvette

R ¹⁾	=	1.78
R1	=	15.75
R2	=	
R3	=	
r	=	

Chambre à poudre

E	=	
P1 ¹⁾	=	12.95
P2 *	=	11.56

Cône de raccordement

alpha *	=	8°55'01"
S *	=	118.96
r1 max	=	25.00
r2	=	

Collet

H1 *	=	10.87
H2 ¹⁾	=	10.85

Prise de rayures

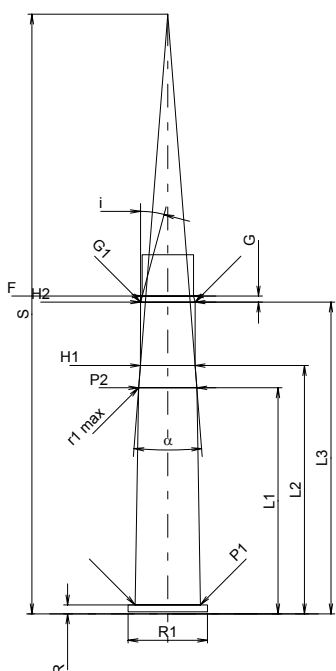
G1 ¹⁾ *	=	10.85
G ¹⁾	=	1.19
alpha 1 *	=	30°
h	=	
s	=	
i ¹⁾ *	=	15°
w	=	

Canon

F ¹⁾ *	=	10.21
Z ¹⁾	=	10.36

Rayures

b	=	3.19
N	=	6
u	=	406.00
Q	=	83.33 mm ²



Échelle 1:1.5

Dimensions en << mm >>
Dimensions et tolérances pour les canons
d'épreuve: Voyez Annexe CR 1.

Notes: 1) A' contrôler pour la sécurité
* Dimensions de base