

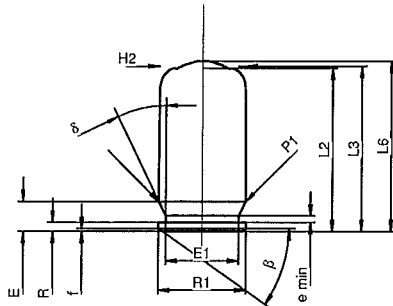
C.I.P.**45 Rubber**

Pays d'origine: RU

TAB. X

Date 09-05-05

Révision

**CARTOUCHE MAXI****Longueurs**

L1	=	
L2	=	22.50
L3 1)	=	22.81
L4	=	
L5	=	
L6 1)	=	23.50

Culot

R	=	1.24
R1	=	12.19
R3	=	
E	=	4.11
E1	=	10.16
e min	=	0.89
δ	=	26°
f	=	0.38
β	=	35°

Chambre à poudre

P1	=	12.09
P2	=	

Cône de raccordement

α	=	
S	=	
r1 min	=	
r2	=	

Collet

H1	=	
H2 1)	=	12.01

Projectile

G1	=	
G2	=	
F	=	
L3+G	=	

Pressions (Énergies)**Méthode transducteur**

Pmax	=	600 bar
PK	=	690 bar
PE	=	780 bar
M	=	12.50

Autres indications

Fe	=	
delta L	=	

CHAMBRE MINI**Longueurs**

L1	=	
L2	=	
L3 1)	=	19.97

Cuvette

R	=	
R1	=	12.21
R2	=	
R3	=	
r	=	

Chambre à poudre

E	=	3.75
P1 1)	=	12.18
P2	=	

Cône de raccordement

α	=	
S	=	
r1 max	=	
r2	=	

Collet

H1	=	
H2 1)	=	12.03

Prise de rayures

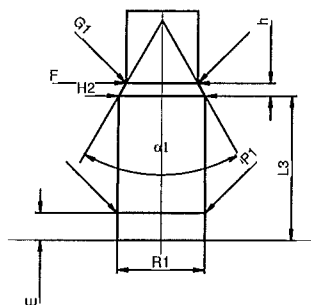
G1	=	10.00
G	=	
$\alpha 1$	=	60°
h	=	1.76
s	=	
i	=	
w	=	

Canon

F	=	10.00
Z	=	

Rayures

b	=	
N	=	
u	=	
Q	=	78.54 mm ²



Échelle 1:1

Dimensions en << mm >>
Dimensions et tolérances pour les canons
d'épreuve: Voyez Annexe CR 5.

Notes: 1) A' contrôler pour la sécurité