

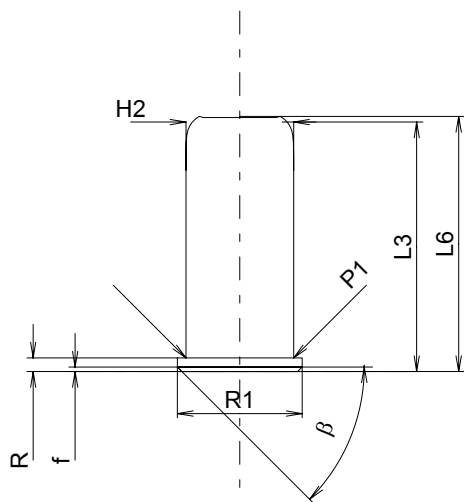
C.I.P.**380 ME Gum**

TAB. X

Date 99-08-04

Pays d'origine: IT

Révision 02-05-15

**CARTOUCHE MAXI****Longueurs**

L1	=	
L2	=	22.00
L3	=	22.00
L4	=	
L5	=	
L6	=	22.50

Culot

R ¹⁾	=	1.20	-0.10
R1	=	11.00	
R3	=		
E	=		
E1	=		
e min	=		
δ	=		
f	=	0.40	
β	=	45°	

Chambre à poudre

P1	=	9.50
P2	=	

Cône de raccordement

α	=	
S	=	
r1 min	=	
r2	=	

Collet

H1	=	
H2 ¹⁾	=	9.50

Projectile

G1	=	
G2	=	
F	=	
L3+G	=	

Pressions (Énergies)**Méthode transducteur**

Pmax	=	300 bar
PK	=	345 bar
PE	=	390 bar
M	=	10.50

Autres indications

Fe	=	
delta L	=	

CHAMBRE MINI**Longueurs**

L1	=	
L2	=	
L3 ¹⁾	=	23.00

Cuvette

R ¹⁾	=	1.30
R1	=	11.10
R2	=	
R3	=	
r	=	

Chambre à poudre

E	=	
P1 ¹⁾	=	9.55
P2	=	

Cône de raccordement

α	=	
S	=	
r1 max	=	
r2	=	

Collet

H1	=	
H2 ¹⁾	=	9.55

Prise de rayures

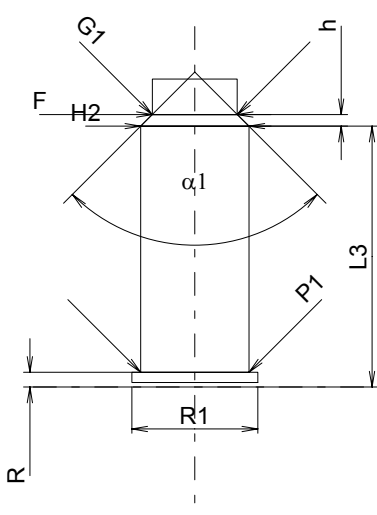
G1 ^{1)*}	=	7.51
G	=	
α1	=	90°
h*	=	1.02
s	=	
i	=	
w	=	

Canon

F ^{1)*}	=	7.50
Z	=	

Rayures

b	=	
N	=	
u	=	
Q	=	44.18 mm ²



Échelle 1.5:1

Dimensions en << mm >>
Dimensions et tolérances pour les canons
d'épreuve: Voyez Annexe CR 1.

Notes: 1) A' contrôler pour la sécurité
* Dimensions de base