

C.I.P.**380 Alfa**

TAB. X

Date 01-05-17

Pays d'origine: CZ

Révision 02-05-15

CARTOUCHE MAXI**CHAMBRE MINI****Longueurs**

L1	=	
L2 *	=	19.40
L3 ¹⁾	=	19.50
L4	=	
L5	=	
L6	=	22.50

Longueurs

L1	=	
L2	=	
L3 ¹⁾	=	19.50

Culot

R	=	1.25
R1	=	11.00
R3	=	
E	=	
E1	=	
e min	=	
δ	=	
f	=	0.38
β	=	45°

Cuvette

R ¹⁾	=	1.35
R1	=	11.05
R2	=	
R3	=	
r	=	

Chambre à poudre

P1	=	9.58
P2	=	

Chambre à poudre

E	=	
P1 ¹⁾	=	9.60
P2	=	

Cône de raccordement

α	=	
S	=	
r1 min	=	
r2	=	

Cône de raccordement

α	=	
S	=	
r1 max	=	
r2	=	

Collet

H1	=	
H2 ¹⁾	=	9.57

Collet

H1	=	
H2 ¹⁾	=	9.60

Projectile

G1	=	
G2	=	
F	=	
L3+G	=	

Prise de rayures

G1 *	=	8.00
G	=	
α1	=	90°
h *	=	0.80
s	=	
i	=	
w	=	

Pressions (Énergies)**Méthode transducteur**

Pmax	=	300 bar
PK	=	345 bar
PE	=	390 bar
M	=	10.50

Canon

F ¹⁾ *	=	8.00
Z ¹⁾	=	8.00

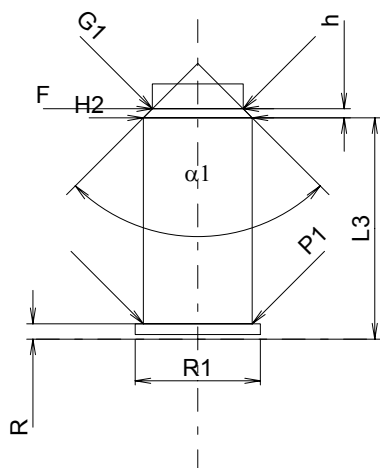
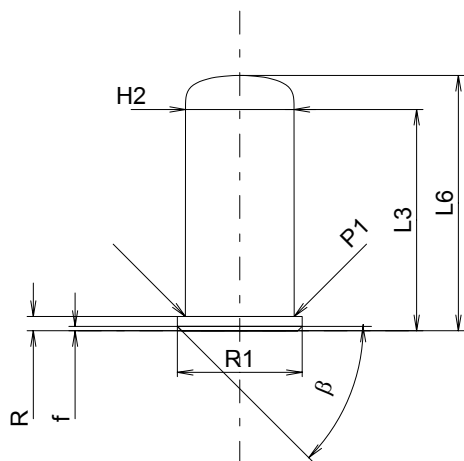
Rayures

b	=	
N	=	
u	=	
Q	=	50.27 mm ²

Autres indications

Fe	=	
delta L	=	

Notes: 1) A' contrôler pour la sécurité
* Dimensions de base



Échelle 1.5:1

Dimensions en << mm >>
Dimensions et tolérances pour les canons
d'épreuve: Voyez Annexe CR 1.