

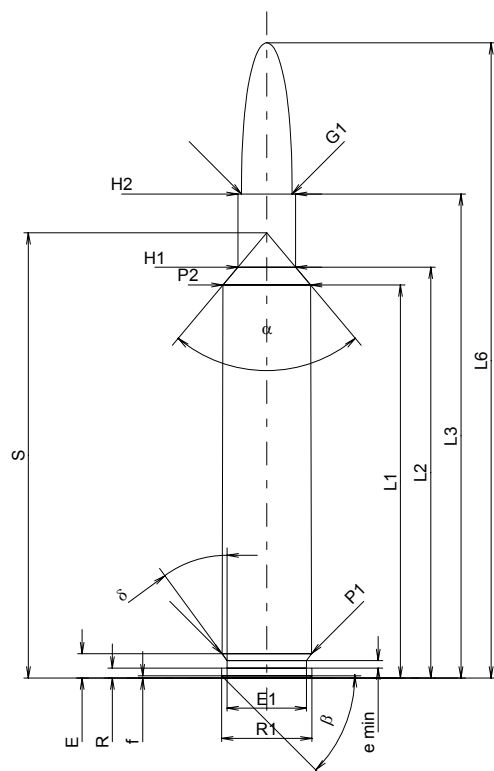
C.I.P.**6,5 x 64**

TAB. I

Date 92-02-27

Pays d'origine: DE

Révision 02-05-15

**CARTOUCHE MAXI****Longueurs**

L1 ¹⁾	=	51.97	-0.20
L2 ¹⁾	=	54.32	-0.20
L3 ¹⁾	=	64.00	
L4	=		
L5	=		
L6	=	84.00	

Culot

R	=	1.30	
R1	=	11.95	
R3	=		
E	=	3.20	
E1	=	10.50	
e min	=	1.00	
delta	=	36°15'	
f	=	0.30	
beta	=	45°	

Chambre à poudre

P1	=	11.82	
P2 ¹⁾ *	=	11.60	-0.20

Cône de raccordement

alpha	=	80°05'21"	
S	=	58.87	
r1 min	=		
r2	=		

Collet

H1*	=	7.65	
H2 ¹⁾	=	7.64	

Projectile

G1 ¹⁾	=	6.70	
G2	=		
F	=		
L3+G ¹⁾	=	72.00	

Pressions (Énergies)**Méthode transducteur**

Pmax	=	4300 bar	
PK	=	4945 bar	
PE	=	5375 bar	
M	=	25.00	
EE	=	3645 Joule	

Autres indications

Fe ¹⁾	=	0.10	
delta L	=		

CHAMBRE MINI**Longueurs**

L1*	=	51.95	
L2*	=	54.30	
L3 ¹⁾	=	64.30	

Cuvette

R	=	1.30	
R1	=	12.00	
R2	=		
R3	=		
r	=		

Chambre à poudre

E	=	3.20	
P1 ¹⁾	=	11.84	
P2*	=	11.63	

Cône de raccordement

alpha ¹⁾	=	80°05'20"	
S	=	58.87	
r1 max	=		
r2	=		

Collet

H1*	=	7.68	
H2 ¹⁾	=	7.67	

Prise de rayures

G1 ¹⁾ *	=	6.72	
G ¹⁾ *	=	8.00	
alpha1	=	180°	
h	=		
s	=		
i ¹⁾	=	0°58'	
w	=		

Canon

F ¹⁾ *	=	6.45	
Z ¹⁾	=	6.70	

Rayures

b	=	3.60	
N	=	4	
u	=	228.00	
Q	=	34.58	mm ²

Échelle 1:1

Dimensions en << mm >>
Dimensions et tolérances pour les canons
d'épreuve: Voyez Annexe CR 1.

Notes: 1) A' contrôler pour la sécurité
* Dimensions de base