

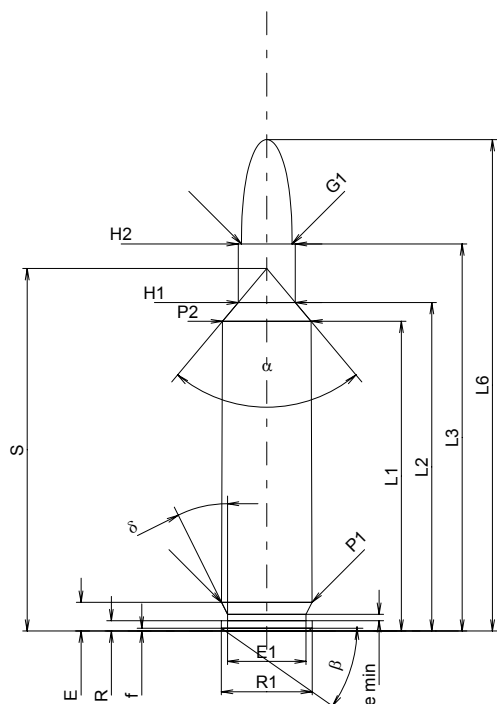
C.I.P.**264 Leroy N.E.**

TAB. I

Date 94-03-01

Pays d'origine: DE

Révision 02-05-15

**CARTOUCHE MAXI****Longueurs**

L1 ¹⁾ *	=	40.96	-0.20
L2 ¹⁾ *	=	43.45	-0.20
L3 ¹⁾	=	51.20	
L4	=		
L5	=		
L6	=	65.00	

Culot

R	=	1.37	
R1	=	12.01	
R3	=		
E	=	3.80	
E1	=	10.39	
e min	=	0.84	
delta	=	36°	
f	=	0.38	
beta	=	35°	

Chambre à poudre

P1	=	11.97	
P2 ¹⁾ *	=	11.72	-0.20

Cône de raccordement

alpha	=	80°01'02"	
S	=	47.94	
r1 min	=		
r2	=		

Collet

H1 *	=	7.54	
H2 ¹⁾	=	7.54	

Projectile

G1 ¹⁾	=	6.70	
G2	=		
F	=		
L3+G ¹⁾	=	66.16	

Pressions (Énergies)**Méthode transducteur**

Pmax	=	4400 bar	
PK	=	5060 bar	
PE	=	5500 bar	
M	=	25.00	
EE	=	3675 Joule	

Autres indications

Fe ¹⁾	=	0.10	
delta L	=		

CHAMBRE MINI**Longueurs**

L1 *	=	40.93	
L2 *	=	43.42	
L3 ¹⁾	=	51.40	

Cuvette

R	=	1.37	
R1	=	12.05	
R2	=		
R3	=		
r	=		

Chambre à poudre

E	=	3.80	
P1 ¹⁾	=	12.00	
P2 *	=	11.75	

Cône de raccordement

alpha ¹⁾	=	80°09'07"	
S	=	47.91	
r1 max	=		
r2	=		

Collet

H1 *	=	7.56	
H2 ¹⁾	=	7.56	

Prise de rayures

G1 ¹⁾ *	=	6.71	
G ¹⁾ *	=	14.96	
alpha1	=	180°	
h	=		
s *	=	10.00	
i ¹⁾	=	1°30'05"	
w	=		

Canon

F ¹⁾ *	=	6.45	
Z ¹⁾	=	6.70	

Rayures

b	=	1.30	
N	=	4	
u	=	200.00	
Q	=	33.33	mm ²

Échelle 1:1

Dimensions en << mm >>
Dimensions et tolérances pour les canons
d'épreuve: Voyez Annexe CR 1.

Notes: 1) A' contrôler pour la sécurité
* Dimensions de base